

# CENTENNIAL PLAZA

Located at the Northeast corner of Centennial Parkway and Goldfield.



## SPECIFICATIONS

### LOCATION

Located at the Northeast corner of Centennial Parkway and Goldfield

### MUNICIPALITY

Las Vegas

### ZONING

C-2

### PARCEL NUMBER

124-22-801-013

### ACREAGE

+/-4 acres

### PROJECT

Commercial Retail Center

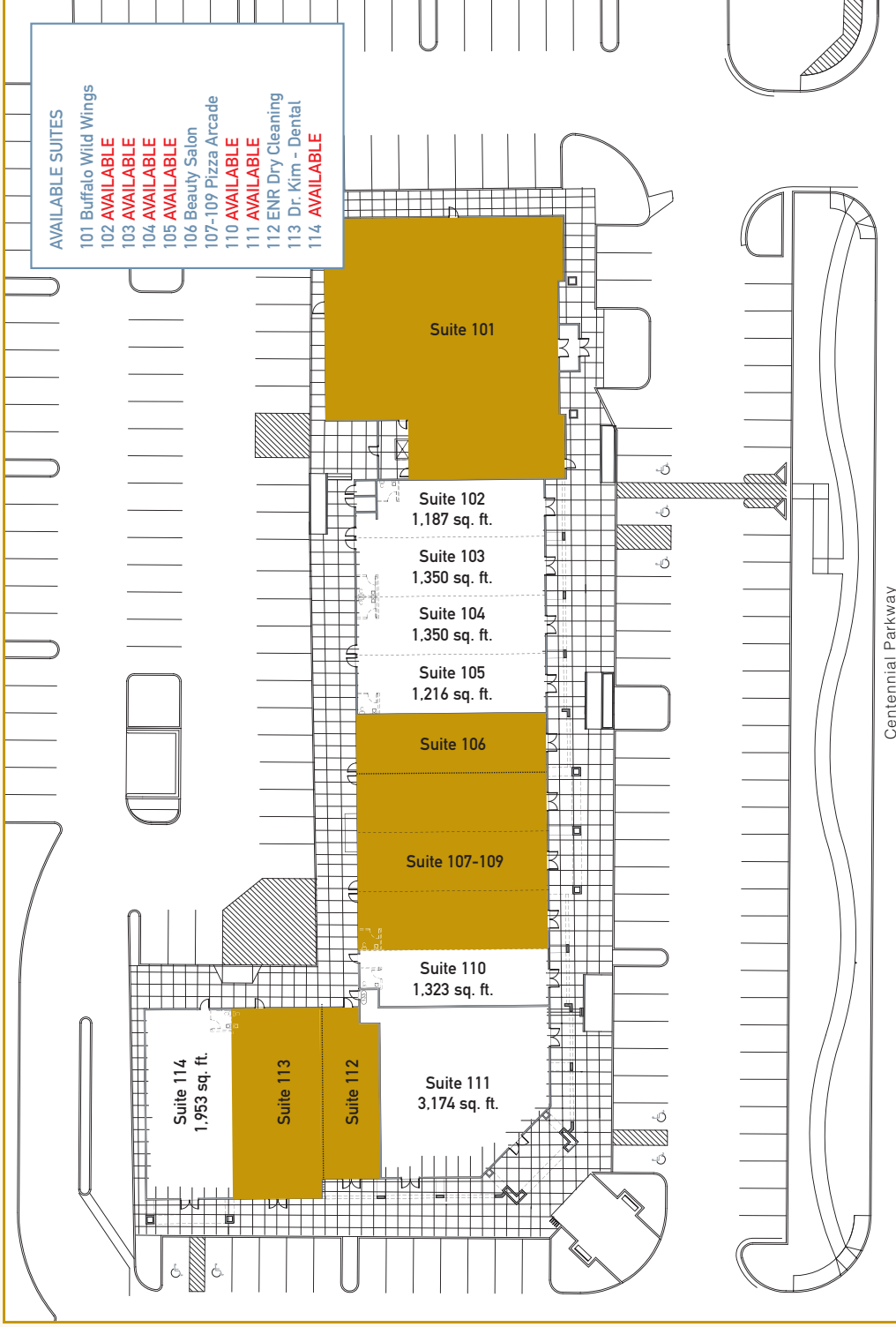
### CONSTRUCTION STATUS

NOW OPEN

### HIGHLIGHTS

- Constructed in 2005
- Exploding Residential Growth
- Buffalo Wild Wings anchors center
- Strong demographics with 113,251 people within a 3-mile radius
- Mix of national and local tenants
- 26,500 sq. ft. of commercial retail
- Pylon signage on Centennial Parkway

## SITE MAP



### PRICING

Leasing rates starting at \$1.85 per sq. ft.

### DEMOGRAPHICS

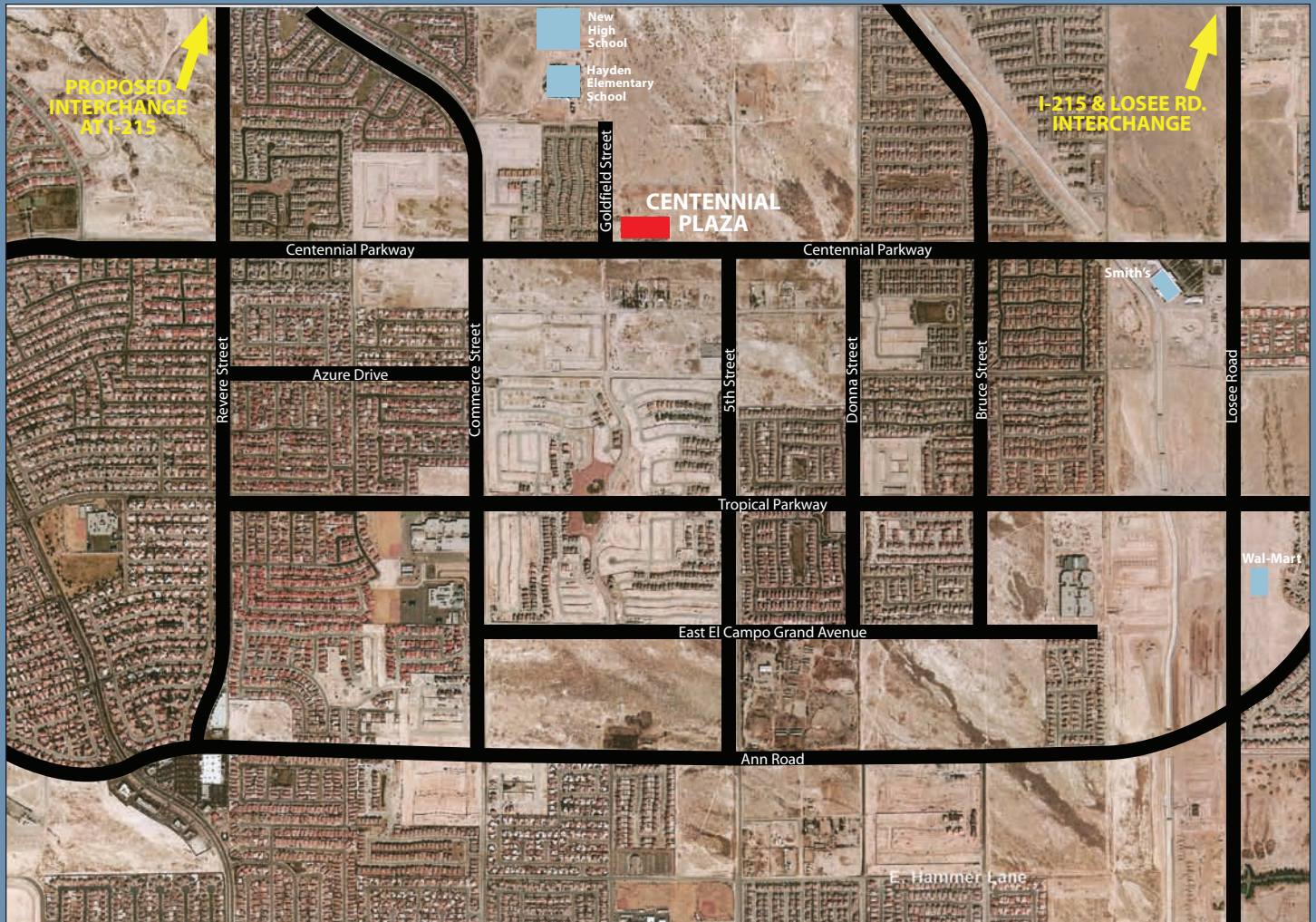
CATEGORY	1 MILE	3 MILE	5 MILE
Households	19,539	35,014	110,371
Population	59,291	113,251	343,818
Avg. Household Income	\$63,368	\$60,919	\$53,233

## CENTENNIAL PLAZA



# CENTENNIAL PLAZA

## AERIAL VIEW



### FOR INFORMATION CONTACT

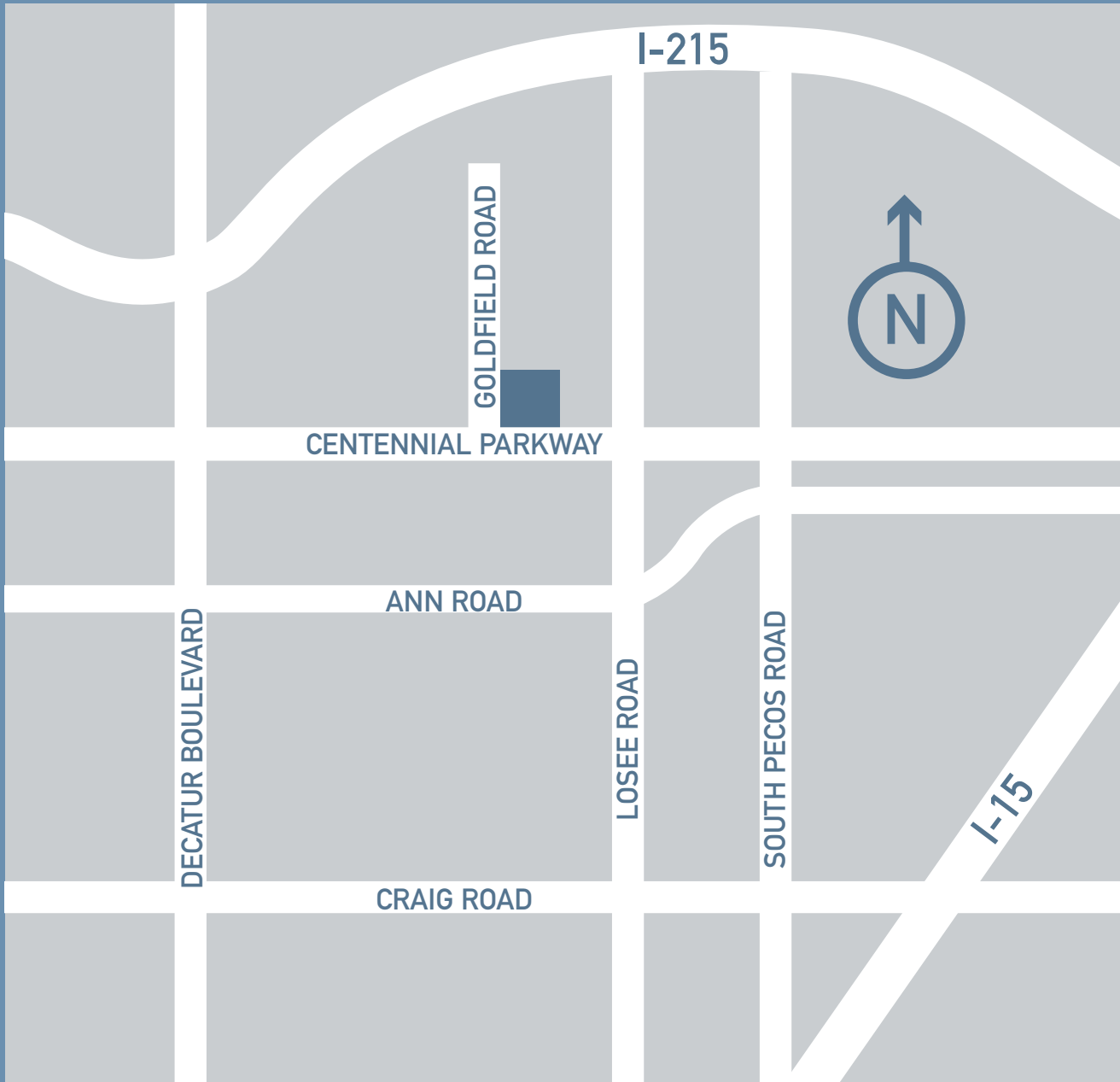
Randi Shanel  
Corporate Sales  
and Leasing

Nigro Development  
3965 South Durango Drive, Suite 106  
Las Vegas, Nevada 89147

phone 702.247.1915  
fax 702.247.1916  
email [rshanel@nigrodevelopment.net](mailto:rshanel@nigrodevelopment.net)  
web [www.nigrodevelopment.net](http://www.nigrodevelopment.net)



# CENTENNIAL PLAZA



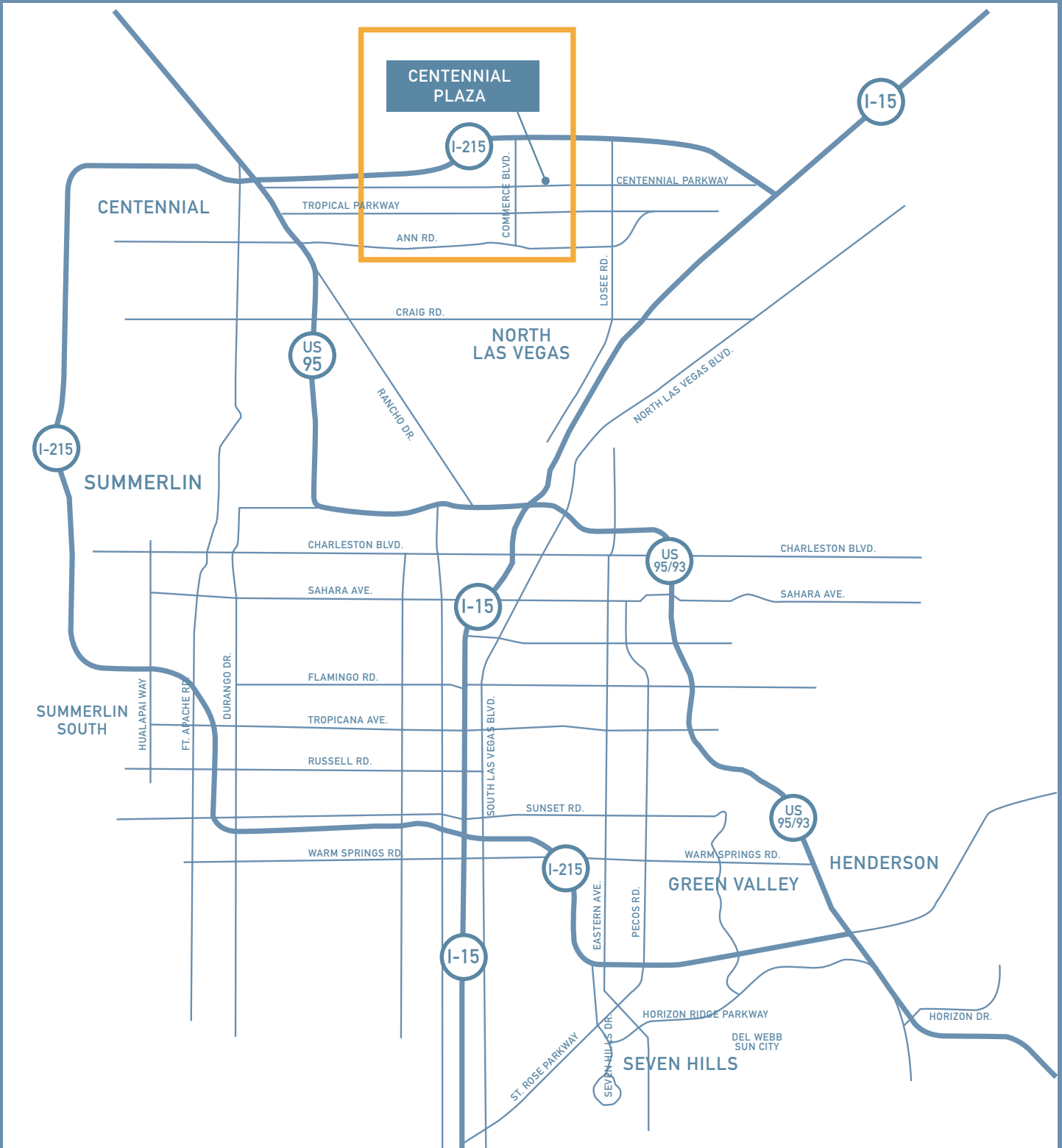
## FOR INFORMATION CONTACT

Randi Shanel  
Corporate Sales  
and Leasing

Nigro Development  
3965 South Durango Drive, Suite 106  
Las Vegas, Nevada 89147

phone 702.247.1915  
fax 702.247.1916  
email [rshanel@nigrodevelopment.net](mailto:rshanel@nigrodevelopment.net)  
web [www.nigrodevelopment.net](http://www.nigrodevelopment.net)





FOR INFORMATION CONTACT



Randi Shanel  
Corporate Sales  
and Leasing

Nigro Development  
3965 South Durango Drive, Suite 106  
Las Vegas, Nevada 89147

phone 702.247.1915  
fax 702.247.1916  
email rshanel@nigrodevelopment.net  
web www.nigrodevelopment.net