

PARK CENTRAL PLAZA

Located at the Southeast corner of Tropical Parkway and Losee Road, bordering Ann Road



SPECIFICATIONS

LOCATION

Southeast corner of Tropical Parkway and Losee Road, bordering Ann Road

MUNICIPALITY

City of North Las Vegas

ZONING

C-1

PARCEL NUMBER

124-25-312-003, 124-25-312-004, 124-25-312-005

ACREAGE

26.67 acres

PROJECT

Wal-Mart neighborhood shopping center

OCCUPANCY

NOW OPEN

CONSTRUCTION START DATE

Phase II - Open 4th Quarter 2008

HIGHLIGHTS

- Access to Interstate 15 and Interstate 215 within one mile
- Across from planned hospital
- Exploding residential growth
- Join tenants such as Wells Fargo, Checker Auto, Terible Herbst, The UPS Store, Allstate Insurance, Al Phillips the Cleaner, Timbers, Great Clips, McDonalds, and many more.



702-247-1915



SITE MAP

- Pending
- Vanilla Shell Available

DEMOGRAPHICS

Category	1-3 Mile	3-5 Mile	5-8 Mile
Households 2008	15,826	65,294	211,788
Population	51,593	217,282	654,862
Avg. Household Income	\$47,469	\$49,159	\$54,043

PRICING

Call 702-247-1915

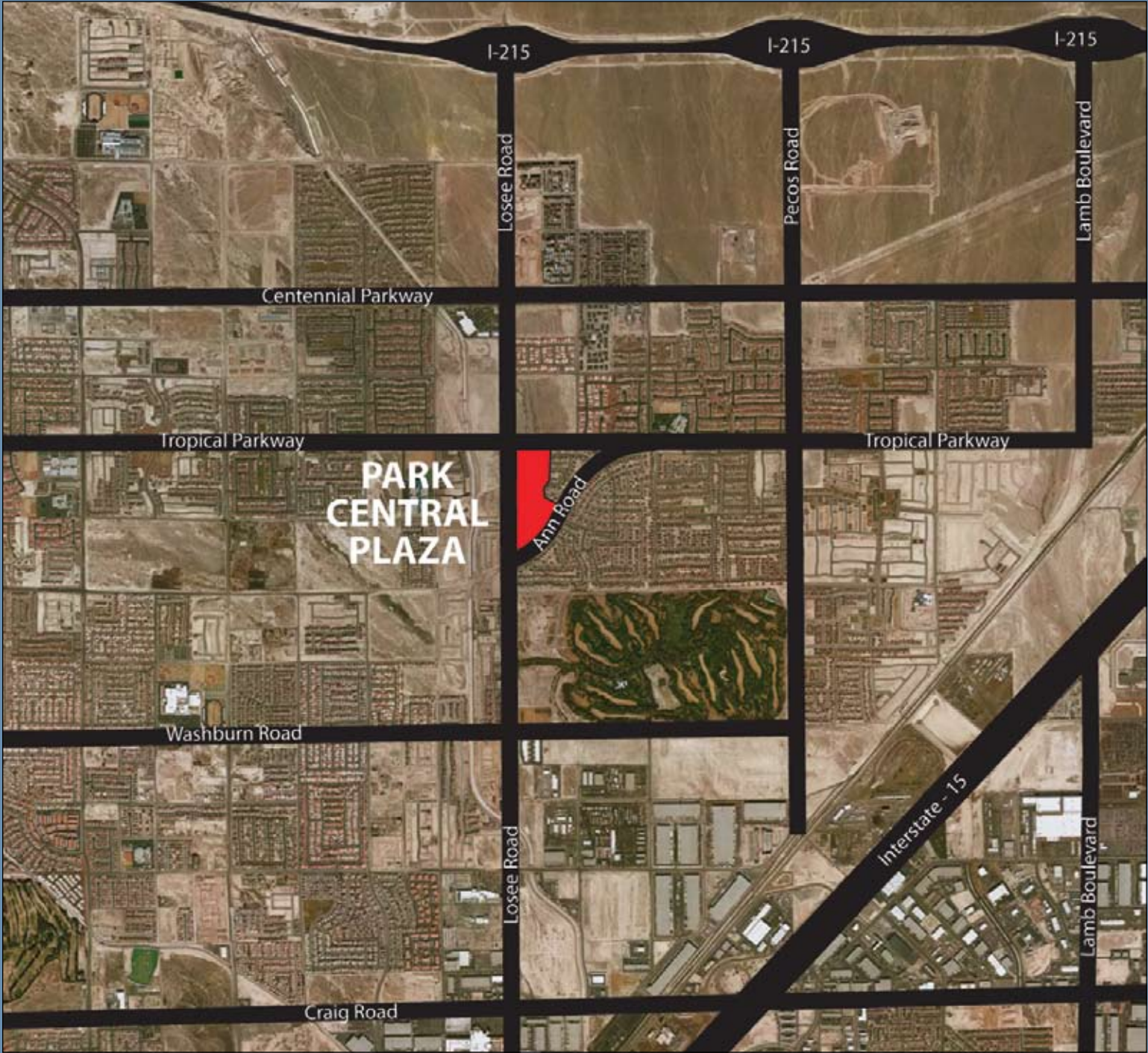
PARK CENTRAL PLAZA



702-247-1915

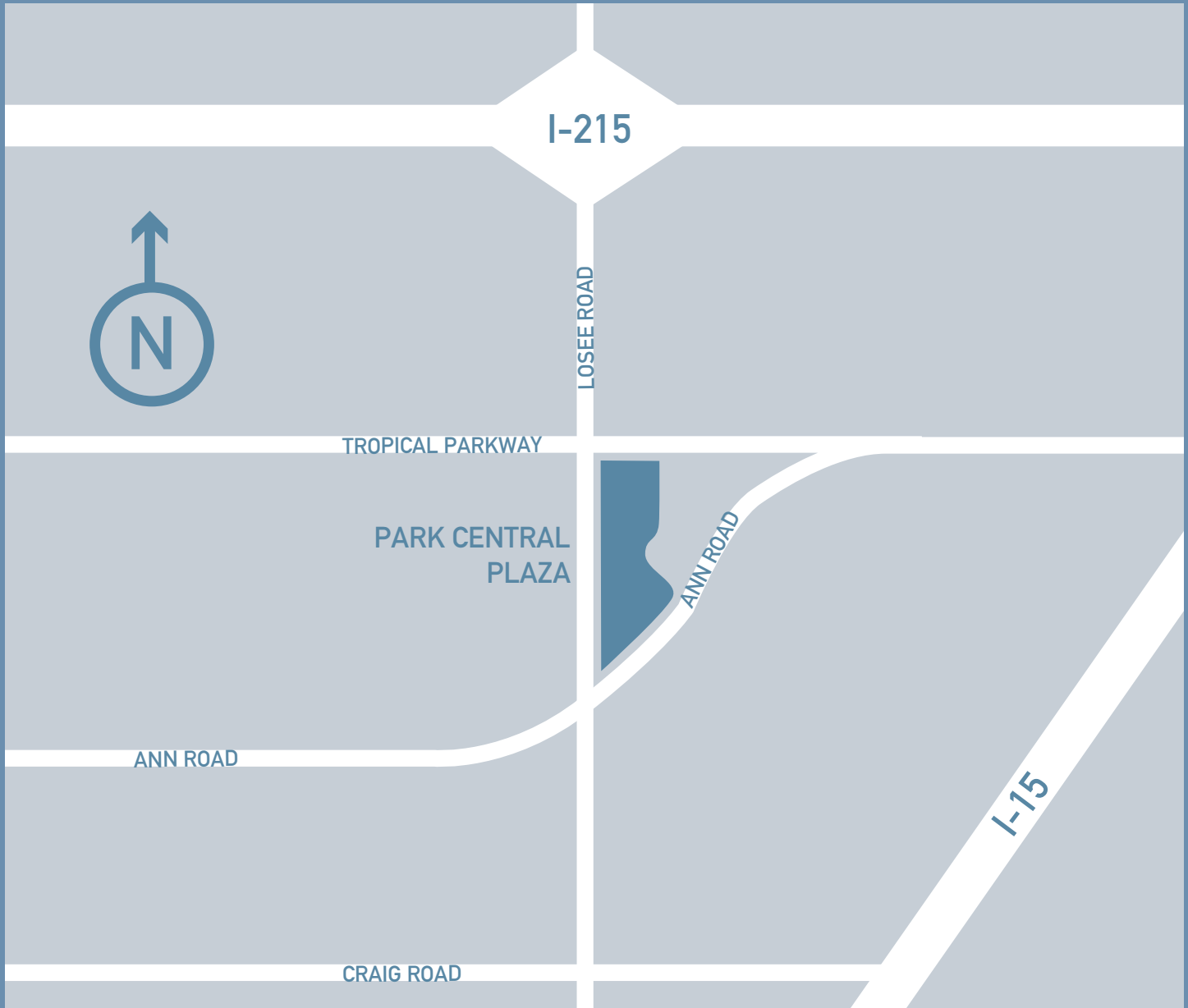
PARK CENTRAL PLAZA

AERIAL VIEW



702-247-1915

PARK CENTRAL PLAZA



FOR INFORMATION CONTACT

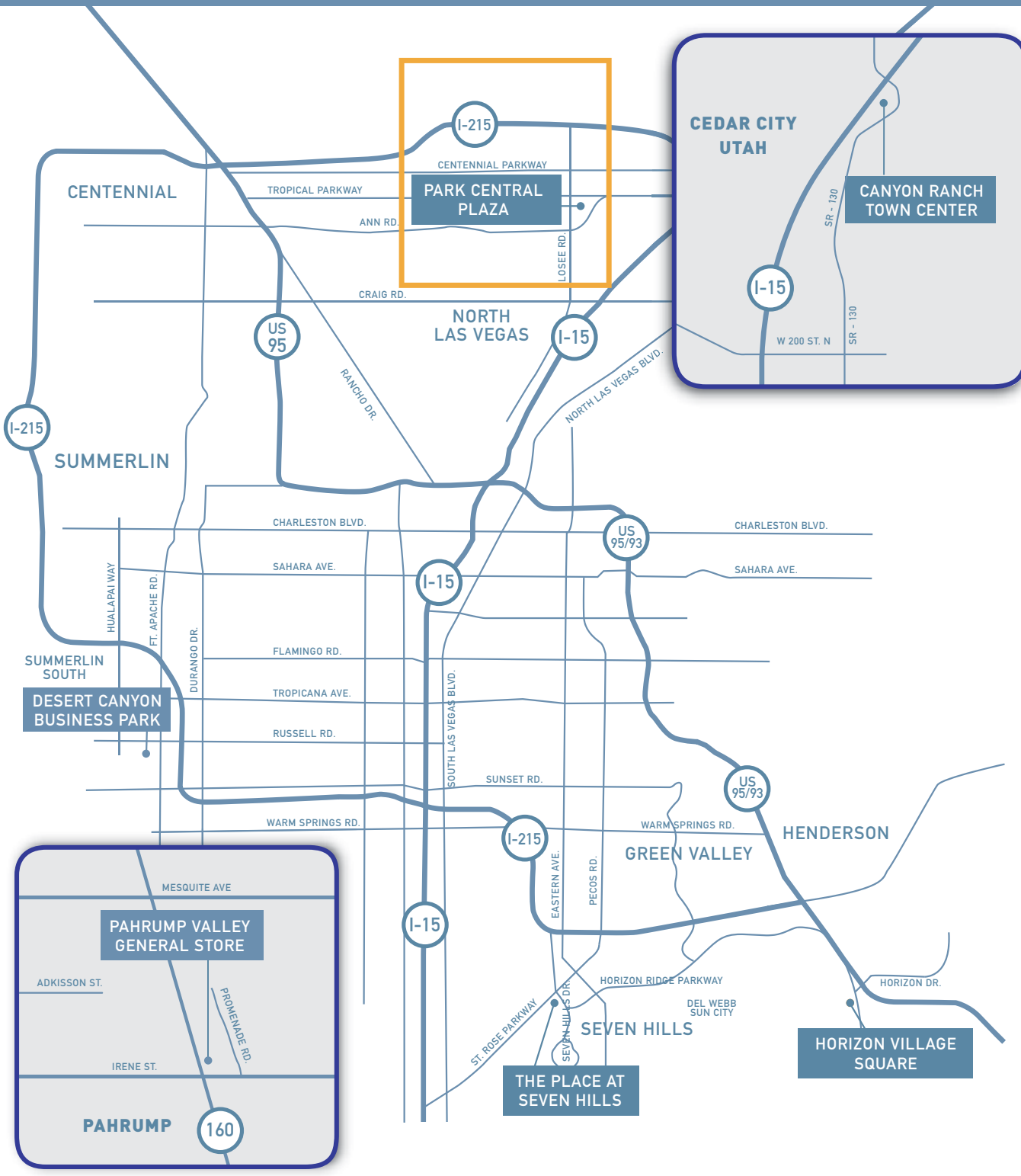


Todd Nigro
Owner/Licensee

Randi Shanel
Corporate Sales
and Leasing

Nigro Development
9115 W. Russell Road, Suite 210
Las Vegas, Nevada 89148

phone 702.247.1915
fax 702.247.1916
email rshanel@nigrodevelopment.net
web www.nigrodevelopment.net



FOR INFORMATION CONTACT



Todd Nigro
Owner/Licensee

Randi Shanel
Corporate Sales
and Leasing

Nigro Development
9115 W. Russell Road, Suite 210
Las Vegas, Nevada 89148

phone 702.247.1915
fax 702.247.1916
email rshanel@nigrodevelopment.net
web www.nigrodevelopment.net